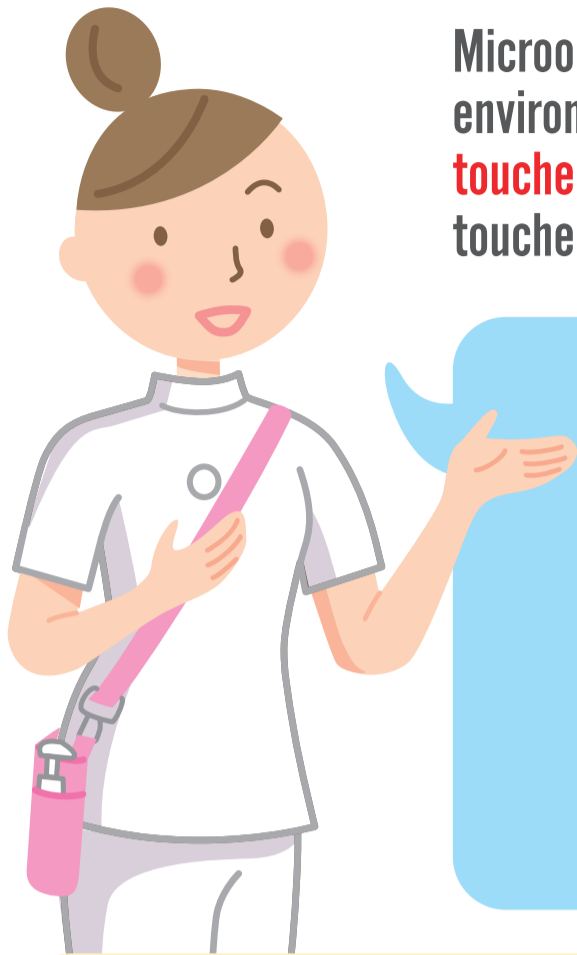


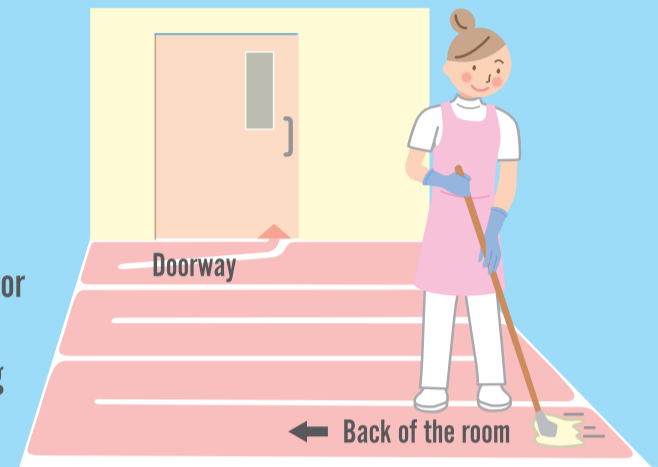
# Hospital Environment Management – Daily Patient's Room Cleaning –

Microorganisms are spread from people's hands after touching surfaces in the environment. This is why more **frequent cleaning and disinfection of frequently touched surfaces**, such as bed rails or doorknobs, is important compared to less touched areas, such as floor or walls.



## Key Points for Cleaning

- Remove dirt and dust  
Microorganisms can spread by floating on dust
- Start cleaning from uncontaminated areas to contaminated areas
- Clean in one direction such as from top to bottom or back to front
- Wipe all surfaces in an S shape to prevent missing any parts of the object
- Do not repeat cleaning a surface once clean



Cleaning areas in the Patient's Room (example)